

# ALEXANDER - PACIFIC - ELGIN BIKEWAY

## RECOMMENDATION

- Creation of a new 6 kilometre long bike boulevard connecting both Red River College campuses
- Innovative features include:
  - Forced right turn traffic calming
  - Mini-roundabout traffic calming
  - Intersection treatments such as bike boxes
  - New multi-use pathways
- Important connections include:
  - Both Red River College campuses
  - Downtown to northwest Winnipeg
  - The Exchange District
  - Future Disraeli Freeway rehabilitation

## WHY

- Improved safety for cyclists
- Enhanced improvements at most major crossings
- Connects key destinations
- Combines innovation while maximizing use of existing facilities
- Enhances pedestrian environment with multi-use pathways and median crossings
- Facilitates safe, direct movement into Red River College Notre Dame
- Significant, long enhancement to the AT network
- Local amenity for schools, residents, community centres, parks

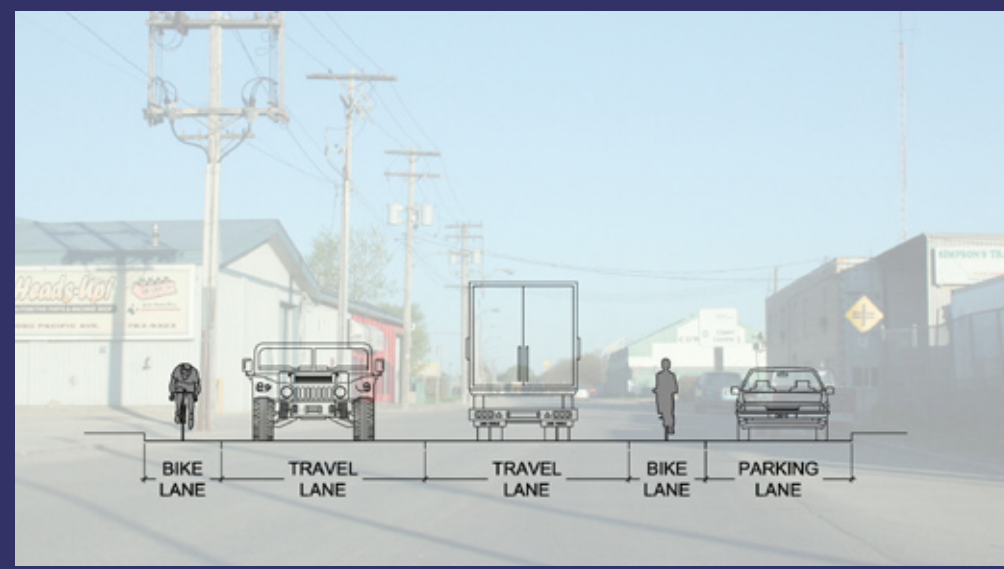




# Alexander – Pacific – Elgin Bike Boulevard

## WHAT IS A BIKE BOULEVARD?

- A bike boulevard is a shared roadway that has been optimized for bicycle travel.
- Bike boulevards reduce traffic volumes and speeds on streets by discouraging cut-through traffic, while allowing local traffic.
- Bike boulevards also optimize bicycle travel by limiting the number of stops and facilitating crossings of busier intersections.
- Consistent use of similar signage throughout route is key.



### PAINT TWO 1.5 METRE BIKE LANES ON PACIFIC BETWEEN MCPHILLIPS AND PUBLIC WORKS YARD

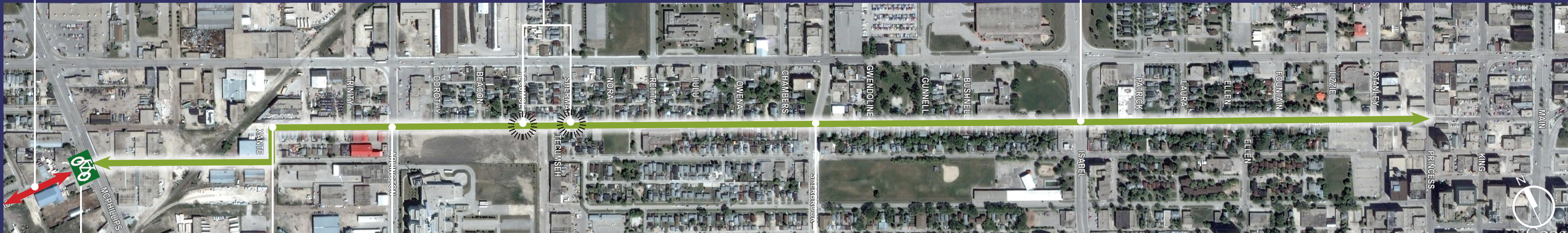
- Removal of south parking lane

Re-orient stop signs to give priority to bike boulevard traffic at Sherman, Tecumseh



### ALEXANDER AT ISABEL

- Create 1.5 metre wide curb cuts through existing median in line with cyclists' movements



Paint bike boxes on Pacific at McPhillips

### ALEXANDER AT XANTE

- New 4-way stop
- Improve lighting through area



### ALEXANDER AT ARLINGTON

- Retain existing pedestrian corridor



### ALEXANDER AT SHERBROOK

- New forced right turn median with pedestrian and cyclist crossing
- Bikes can go straight, while vehicles must turn right onto Sherbrook
- Wide median facilitates easier crossing by cyclists and pedestrians by crossing one lane of traffic at a time





# Alexander – Pacific – Elgin Bike Boulevard

## McPhillips to Red River College Notre Dame

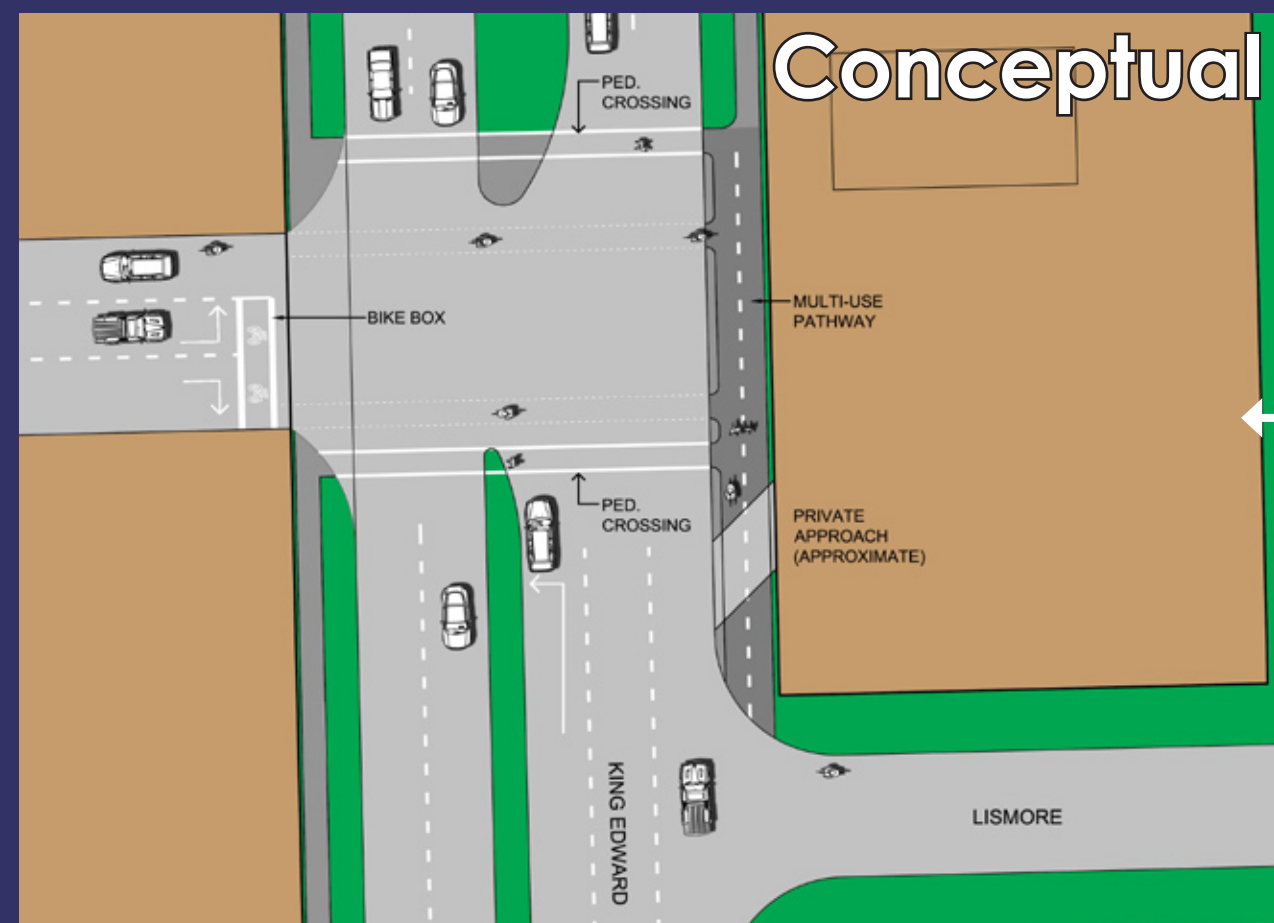
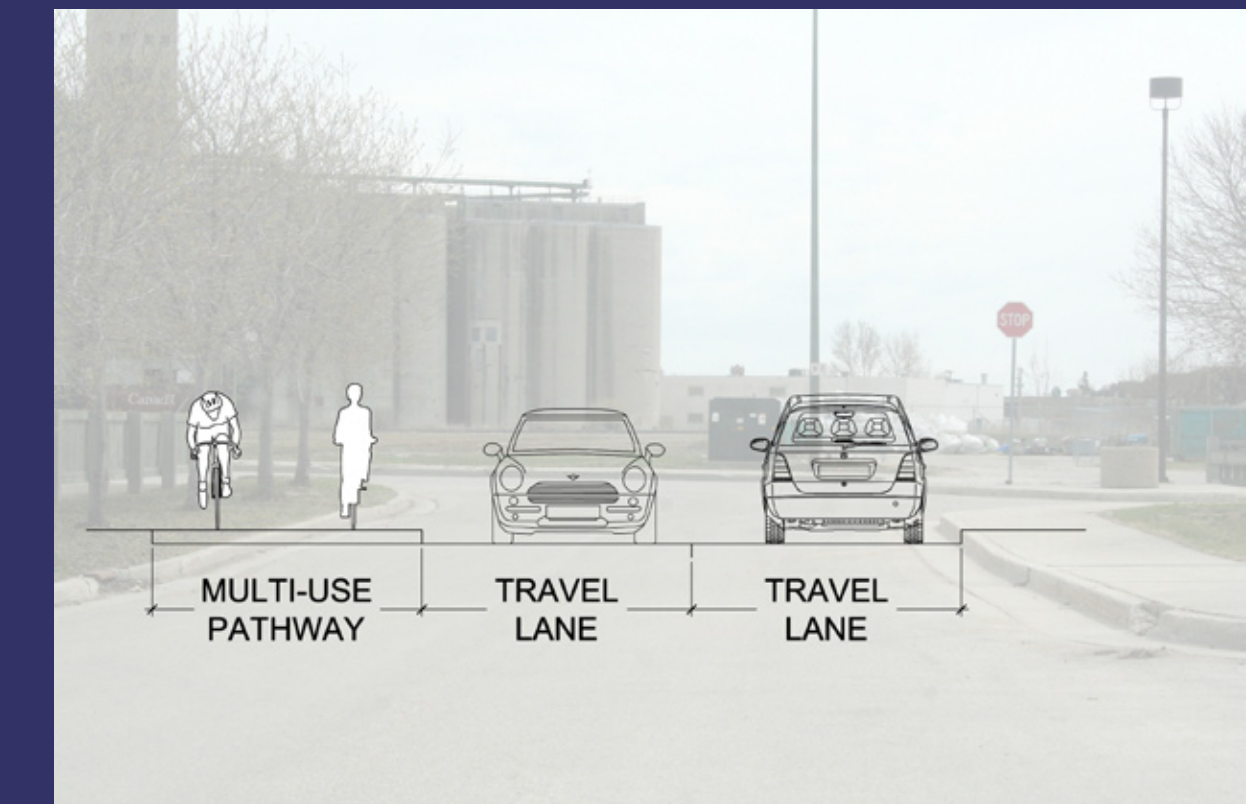
### ELGIN AT KEEWATIN

- Retain existing pedestrian corridor
- New forced right turn median with cyclist crossing



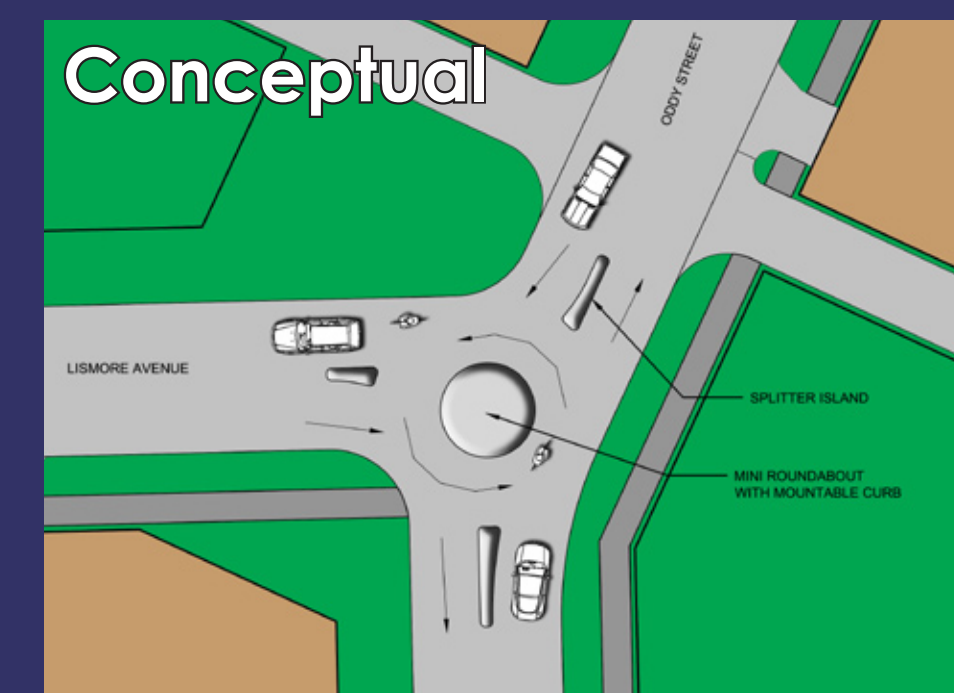
Re-orient stop signs to give priority to bike boulevard traffic at Quelch, Cecil

Create 3.0 metre wide multi-use pathway to link Pacific to Winks via Public Works Yard



### SKINNER AT KING EDWARD

- Create 3.0 metre wide multi-use pathway on east side of King Edward between Lismore and Skinner



### PAINT BIKE BOXES ON:

- Weston at Alexander
- Skinner eastbound at King Edward

### CONVERT 4-WAY STOPS TO 2-WAY ON

- William at Oddy
- Bannatyne at Oddy

### INSTALL MINI-ROUNDBABOUTS

- Alexander at Winks
- Alexander at Worth
- Worth at Elgin
- Elgin at Oddy
- Oddy at Lismore

